

Tutbury VDS Adopted Document

10.0 SOCIAL PATTERNS

10.1 Population figures

Recent census results give the following population counts.

1961 -	2566
1971 -	2905
1981 -	5099
1991 -	3682
2001 -	3121

The figures for 1981 are distorted because the 1981 census grouped Tutbury and Hatton together.

10.2 Demographic profile

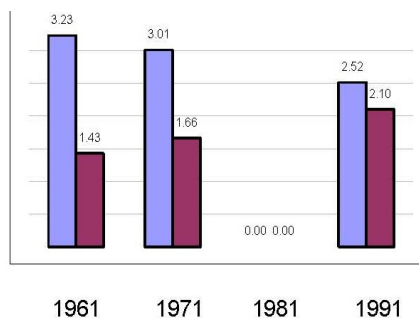
The census results show that the 0 - 20 year age group made up 29% of the population in 1961. By 1991 this had risen to 33% - a gradual increase over thirty years of 4%.

10.3 Gender profile

Over the last forty years, the ratio of males to females has remained fairly constant. From 1961 to 1981, 49% of the population were male. This fell slightly in 1991 to forty eight percent.

10.4 Number of persons per household

The census figures for 1961 show that there were, on average another 3.2 persons per household. By 1991 this figure has fallen to an average of 2.5. This reduction indicates that growth in the number of households has increased more rapidly than growth in population.



10.4.1 persons per household versus rooms per household.

The above chart shows that over the last forty years a trend has developed whereby there are fewer people per household (blue column) but the houses occupied have increased in size. See design comment at the end of this section.

10.5 Car distribution

In 1981 - 66% of households in Tutbury had the use of a motor car. By 1991 this figure had grown to 84%.

The number of two car households doubled during this ten year period.

In 1981 there were no three car households in Tutbury, by 1991 8% of households had three cars.

Design Comment

Tutbury needs to develop in a more sustainable manner (up to and beyond the current design horizon of 2011 -) if the character of the village and its sense of community is to be maintained.