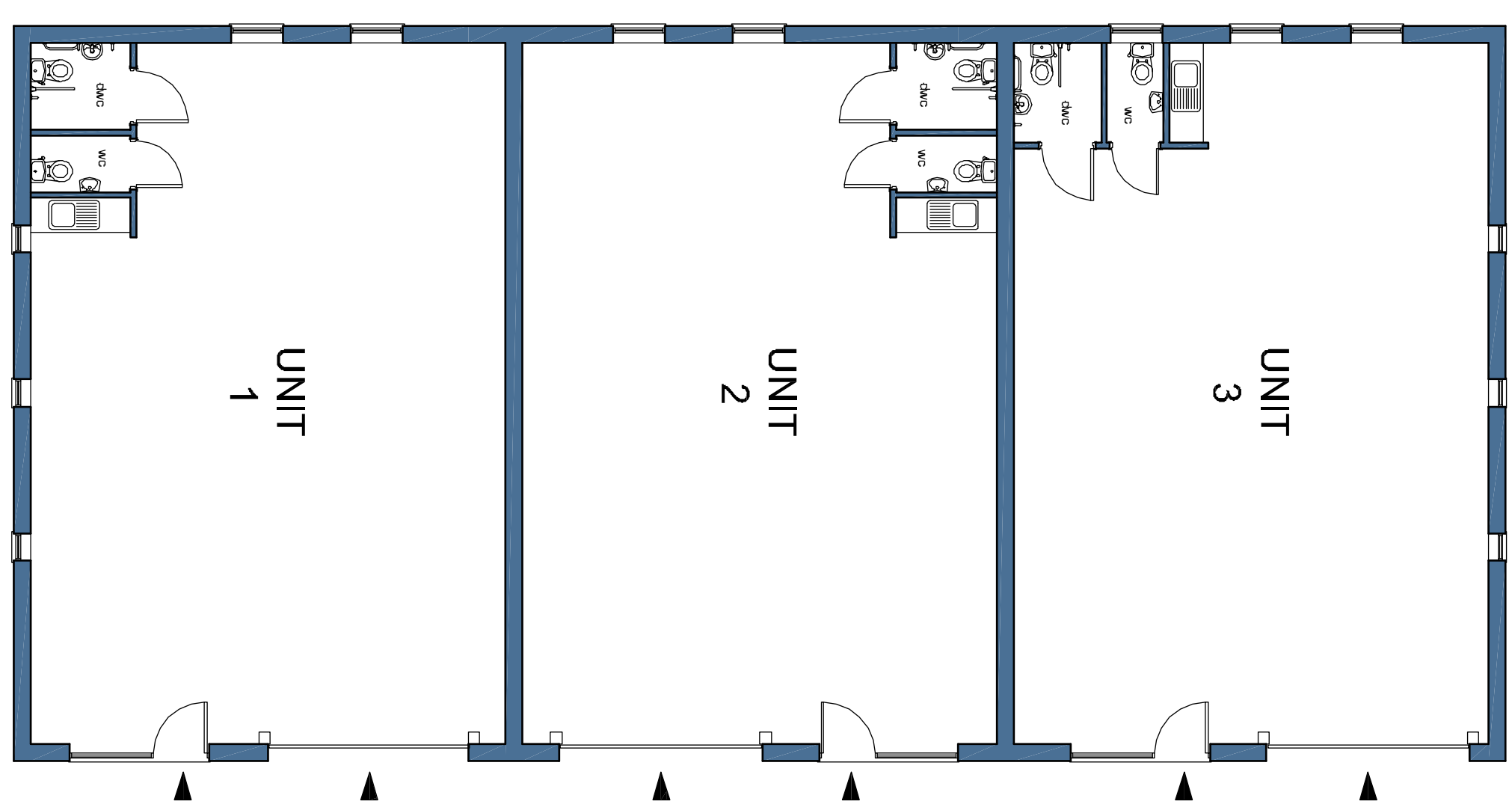


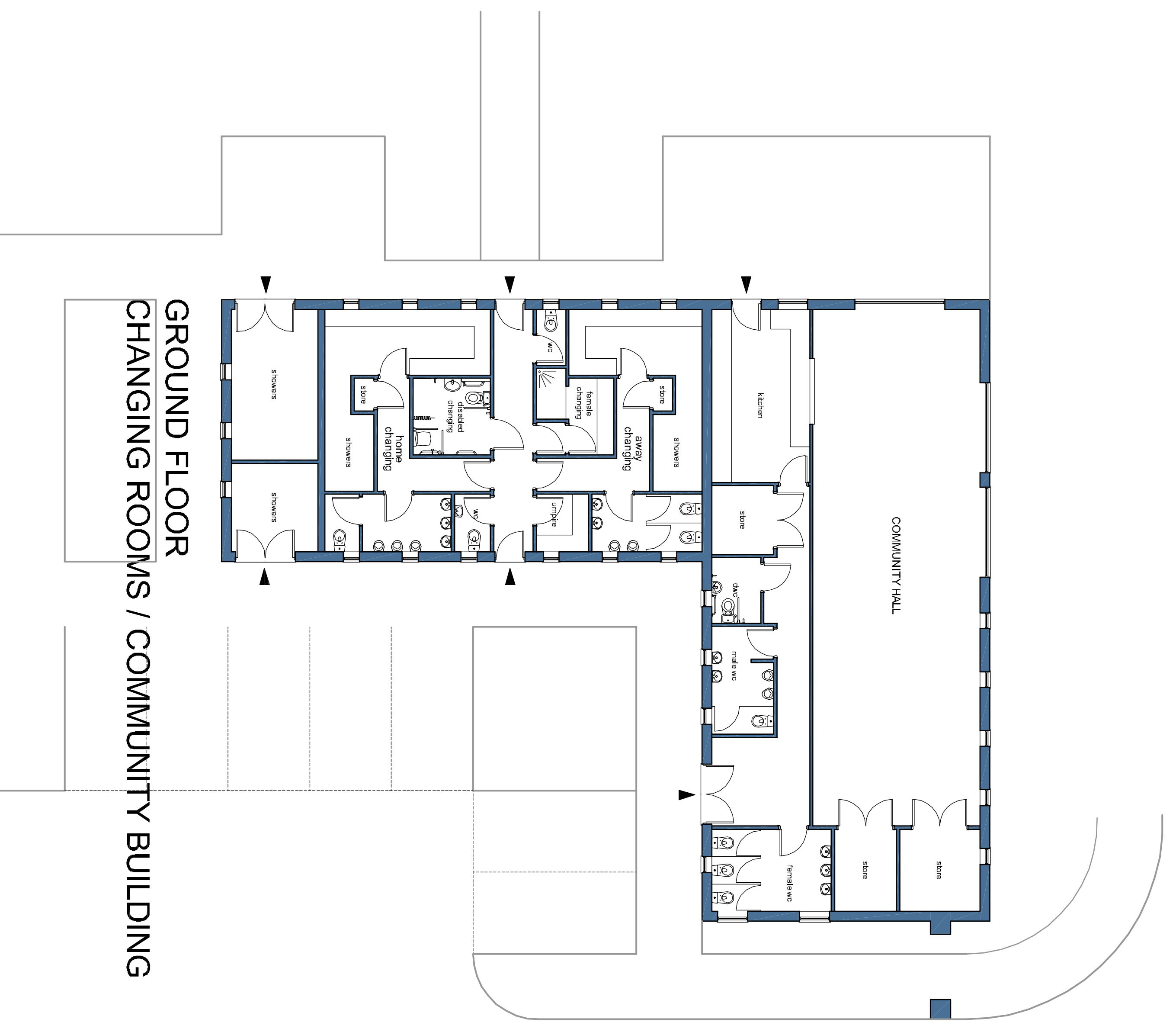
Revision	Date	By	Chkd	No

FLOOR AREAS			
UNIT	m <sup>2</sup>	sq ft	
1	104.2	1121	
2	104.2	1121	
3	104.2	1121	
CHANGING ROOMS	106.6	1147	
COMMUNITY BUILDINGS	150.9	1624	
4	87.7	944	
5	92.5	996	
6	85.8	924	

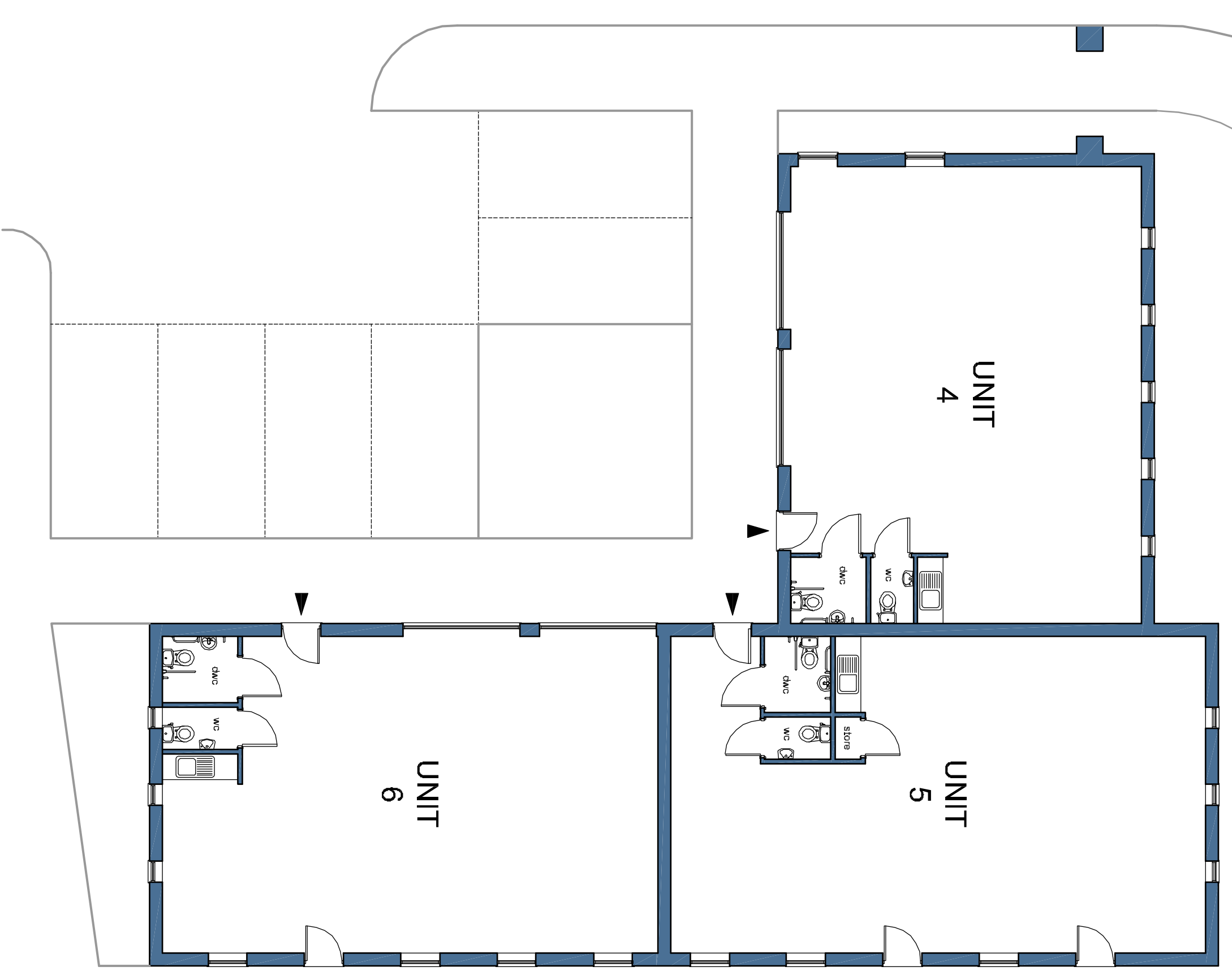
Total to units 1 - 6 = 578.6 m<sup>2</sup>  
Overall units 1 - 14 = 1604.3 m<sup>2</sup>



GROUND FLOOR



GROUND FLOOR  
CHANGING ROOMS / COMMUNITY BUILDING



# PLANNING

**Peveril Homes Ltd.**  
Commercial Development:  
Burton Road,  
Tutbury.  
P-2011-00546  
Received 19/05/11

**Units 1 - 6 & Community Plans.**

1:100 @ A1 SEP '10 **6640 P 51**  
Drawn By: JLG Checked By: NH

**Henry Mein Partnership**  
**Architects**

