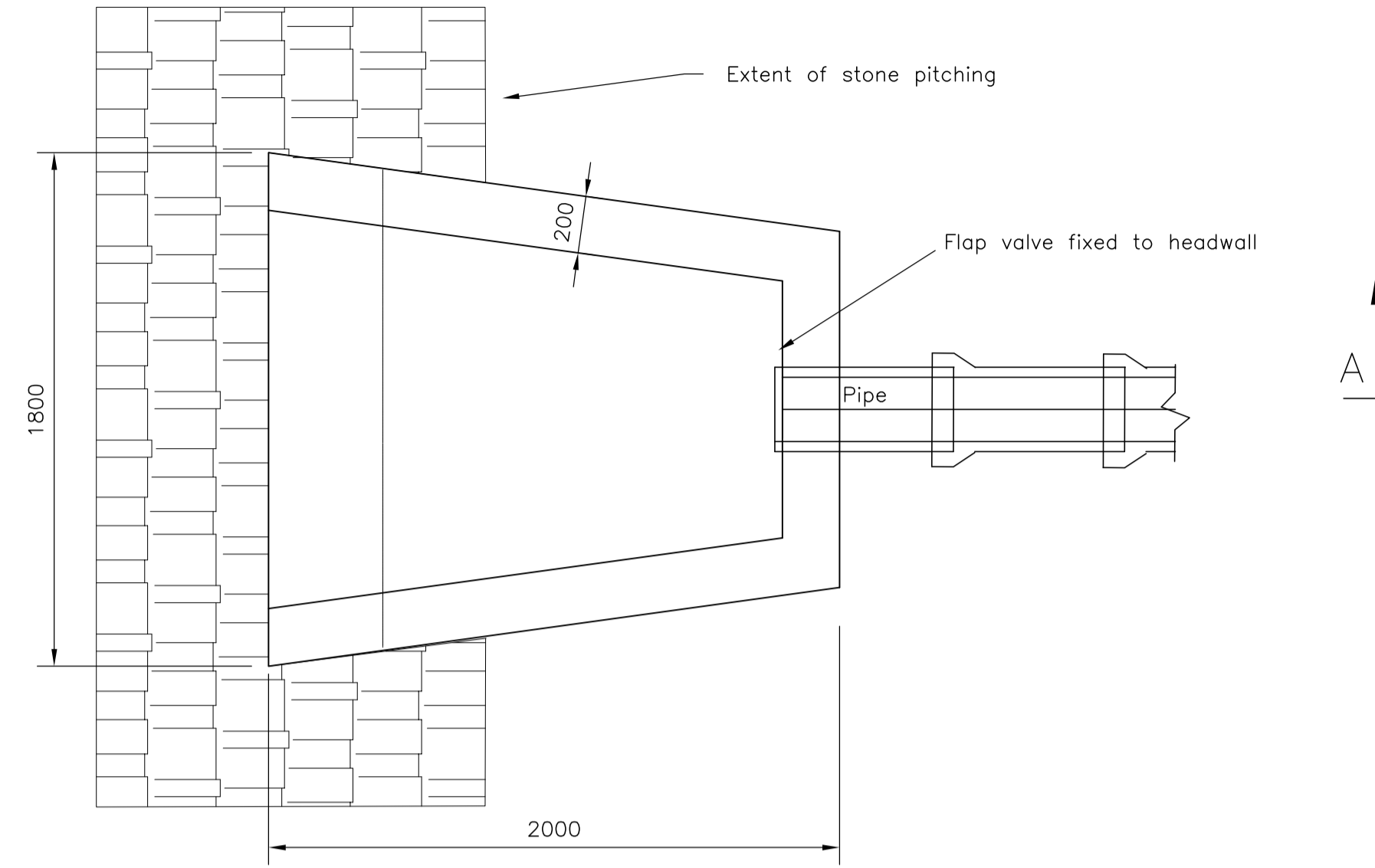
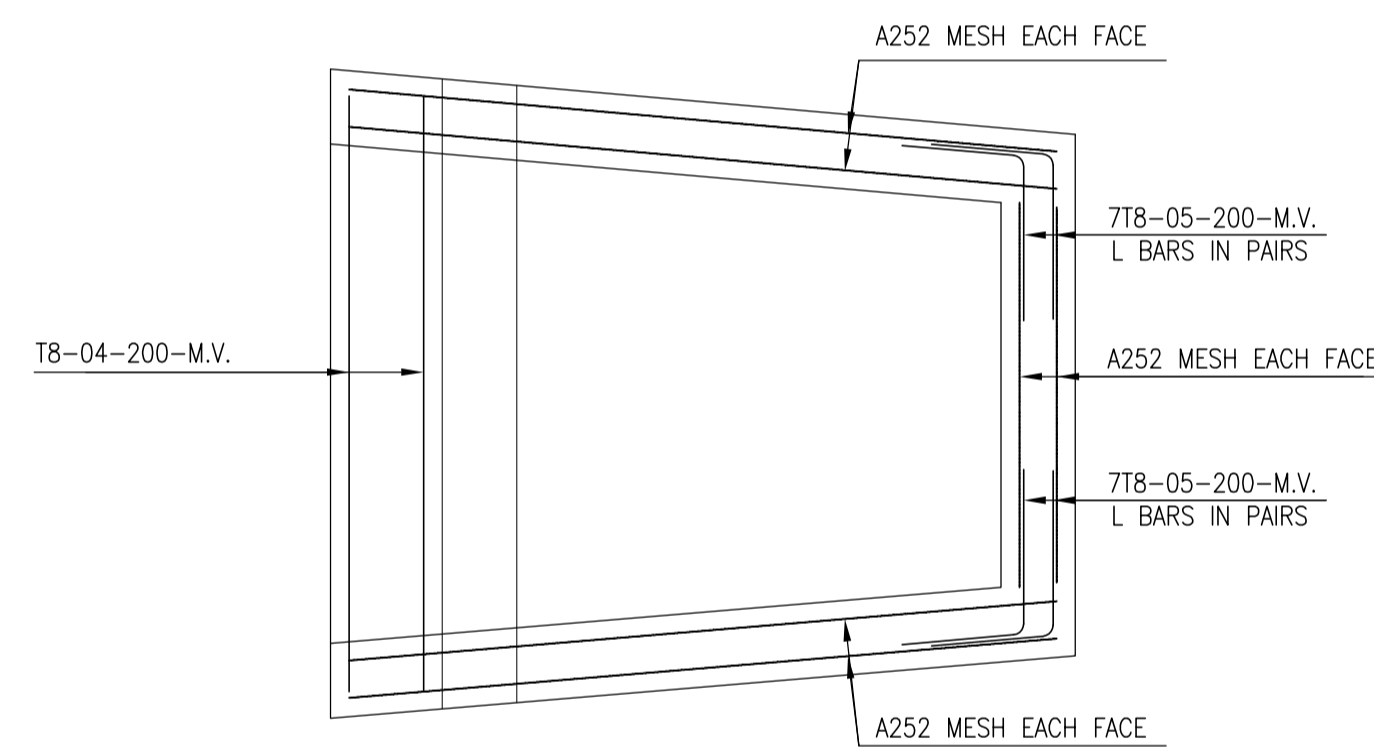


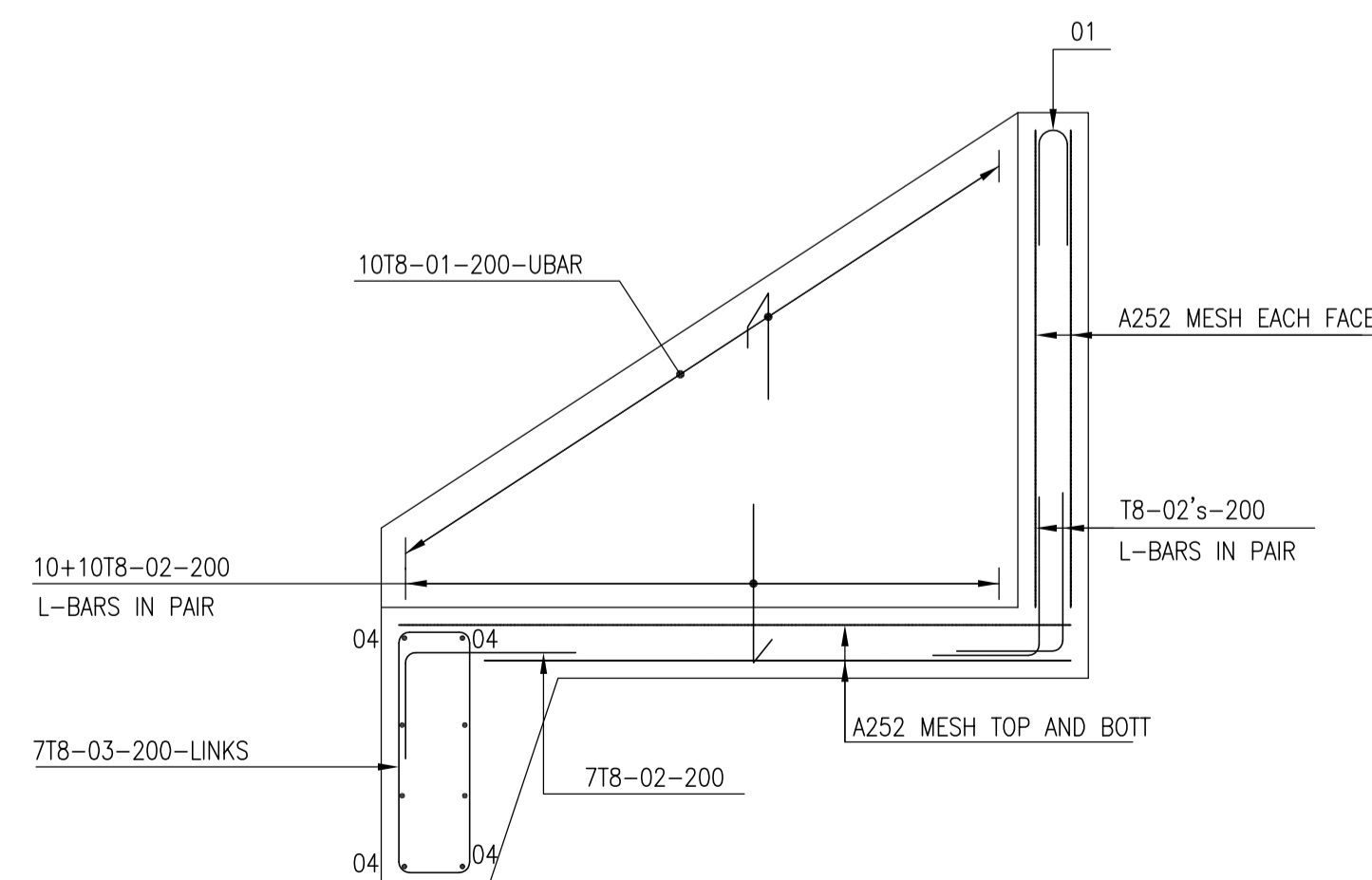
FRONT ELEVATION



PLAN (G.A.)

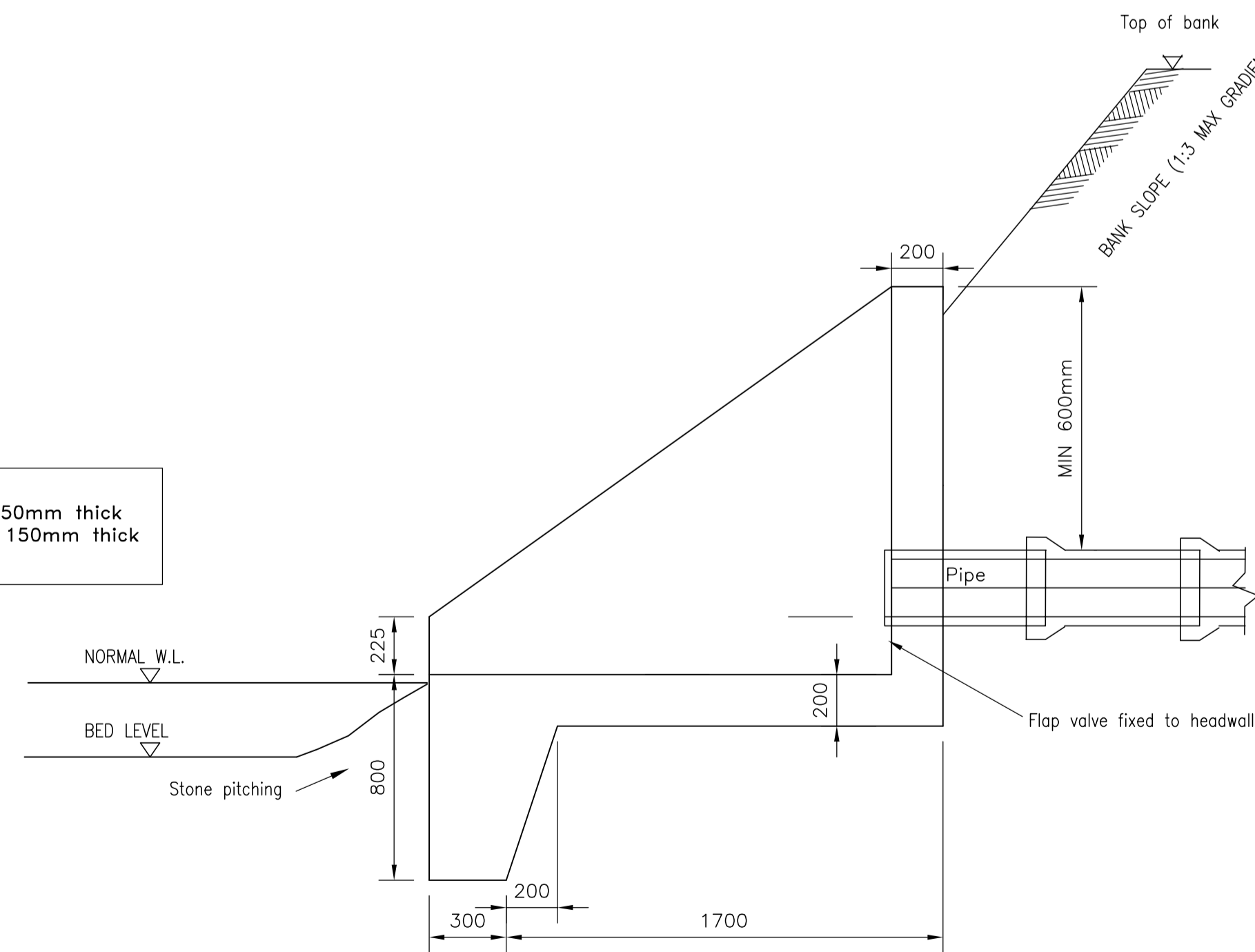


PLAN (R.C.)



SECTION A - A (R.C.)

NOTE:
Stone pitching to be 150mm thick
set in and bedded on 150mm thick
grade C20 concrete



SECTION A - A (G.A.)

NOTES

DO NOT SCALE FROM THIS DRAWING.
ALL DIMENSIONS MUST BE
CHECKED/VERIFIED ON SITE

1. All sewers to be constructed in accordance with W.S.A. SEWERS FOR ADOPTION (6th Edition) and Civil Engineering Specification for the Water Industry (CESWI) 6th Edition.
2. This drawing is to be read in conjunction with all other relevant Engineers and Architects details.
3. All work is to be carried out in accordance with the current British Standards, B.S. codes of practice & Building Regulations.
4. Refer to CESWI for concrete grades & sand / cement mortar grades. Use Polyester resin mortar where covers and frames situated in NRSWA road categories I, II or III.
5. All pipes entering & exiting manholes are to be connected with pipe soffits level.
6. Pre-formed channels are to be used at manholes.
7. High strength concrete benching to be steel travelled to a dense smooth face neatly shaped & finished to all branch connections & laid in accordance with the CESWI.
8. All dimensions are in millimetres unless noted otherwise.
9. Pipe bends to suit direction of flow.
10. All manhole covers and frames to be Ductile Iron Heavy Duty Grade D400 double triangular to BS EN 124.
11. First flexible joint in pipes adjacent to a manhole shall be a max. 600mm from inside face of manhole, connecting to rocker pipe. For pipe diameters 150 - 450 the rocker pipe length shall be 500mm-750mm and for pipe diameters 451 - 675 rocker pipe shall be 750mm-1000mm.
12. All trenches within adoptable highway to be backfilled with Type 1 material.
13. Drawing is not to be scaled. All dimensions are to be checked on site.

PRELIMINARY

Armstrong Stokes & Clayton Limited

Civil & Structural Engineering Consultants
The Book Shop Chambers, 54 King Street, Southwell, Nottinghamshire, NG25 0EN
Tel: 01636 814 815 Fax: 01636 816 343
Client:

Peveril Homes Limited

Job Title:

Proposed Development at Burton Road
Tutbury
Staffordshire

Drawing Title:

Typical Headwall Detail

Drawing number:

P119A/313/P

Drawn: JLW Date: November 2012 Scale: N.T.S.

A1