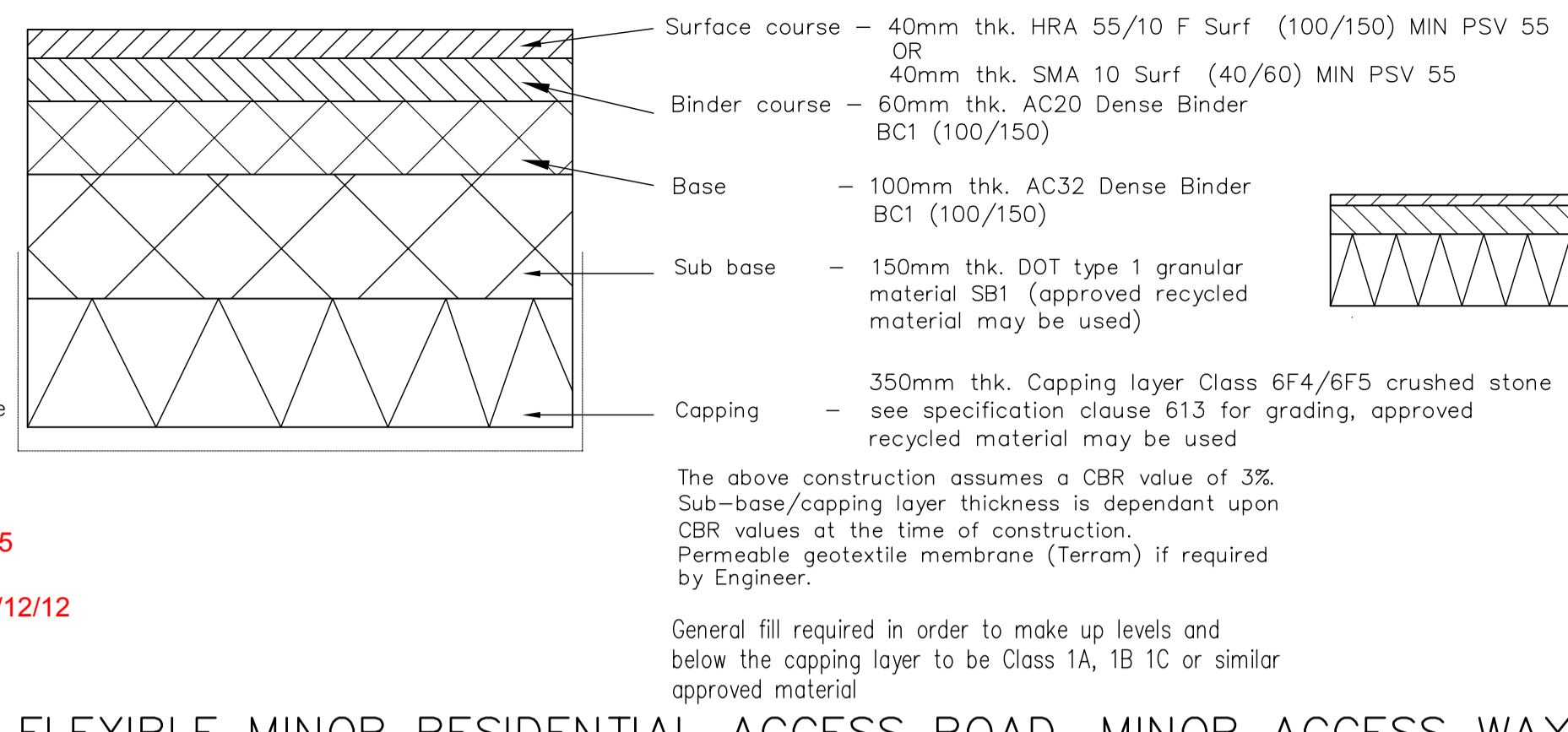
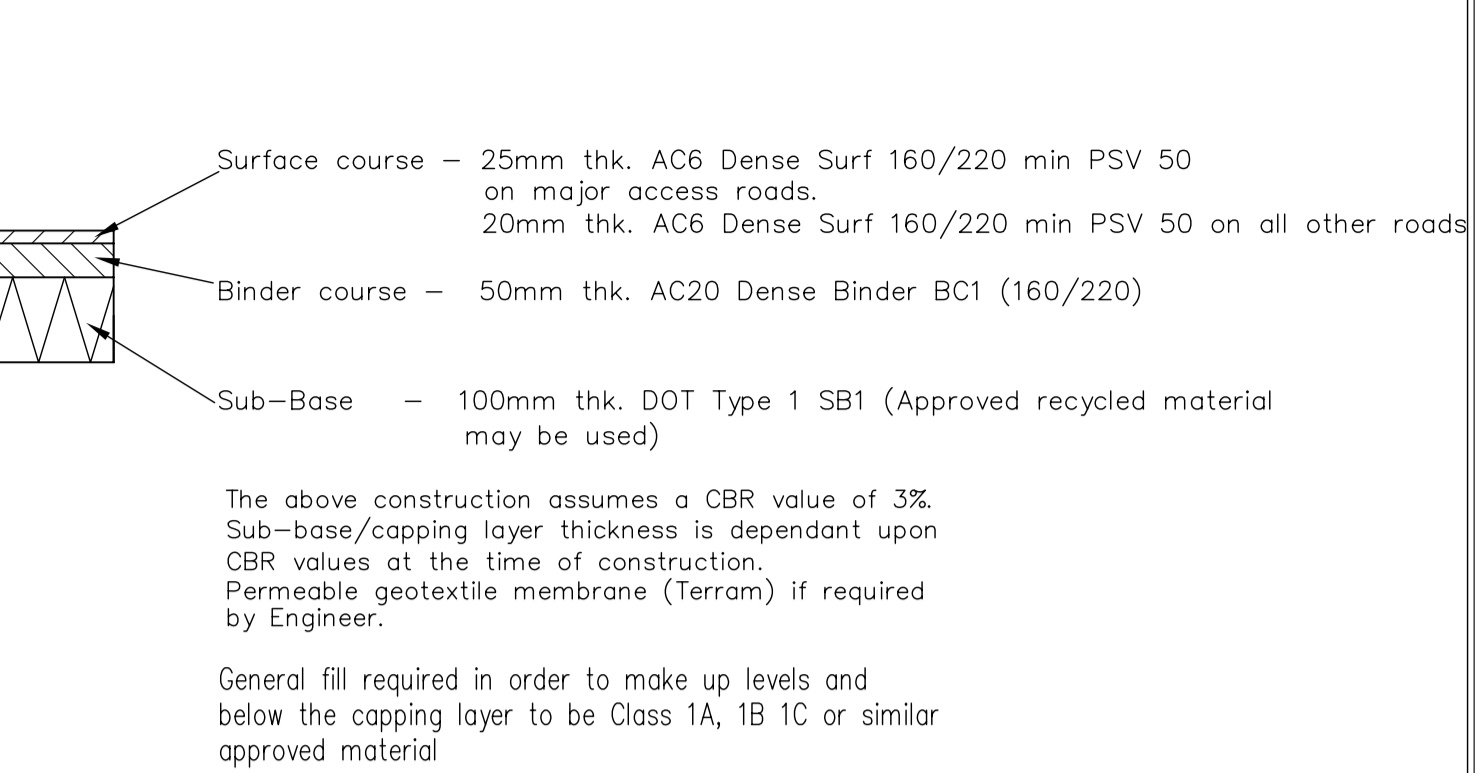


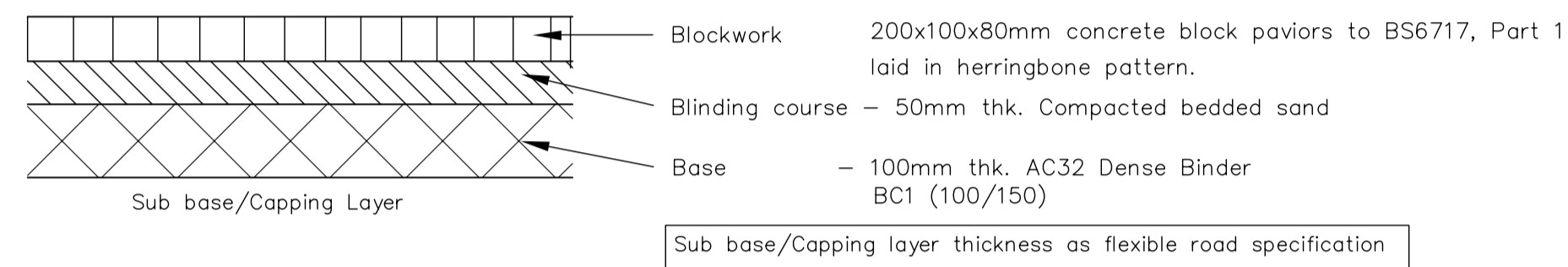
**FLEXIBLE ROAD CONSTRUCTION DETAILS  
MAJOR ACCESS ROAD (ROAD 1)**



**FLEXIBLE MINOR RESIDENTIAL ACCESS ROAD, MINOR ACCESS WAY  
CONSTRUCTION DETAIL (ROADS 2-13)**



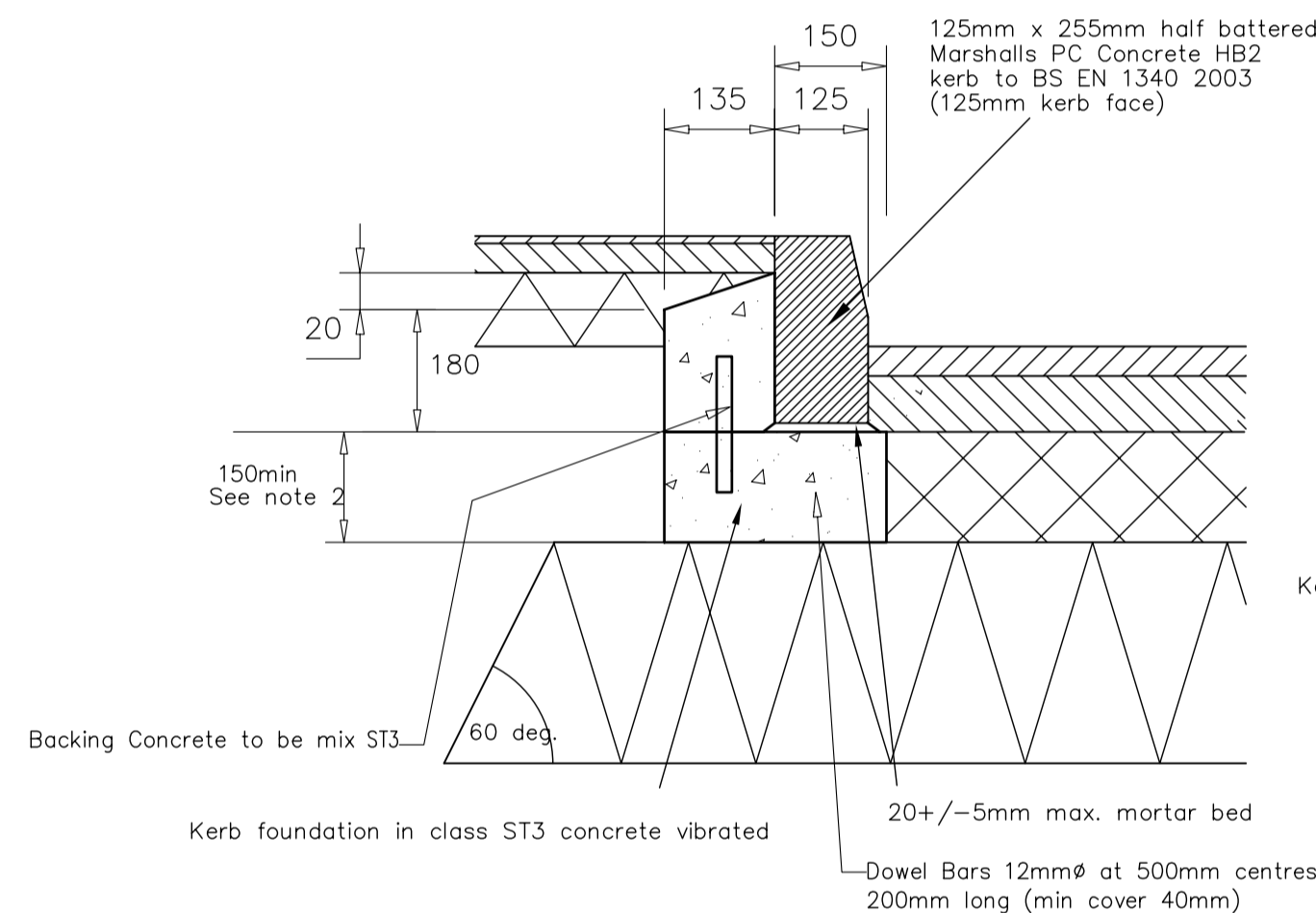
**FOOTWAY CONSTRUCTION DETAIL**



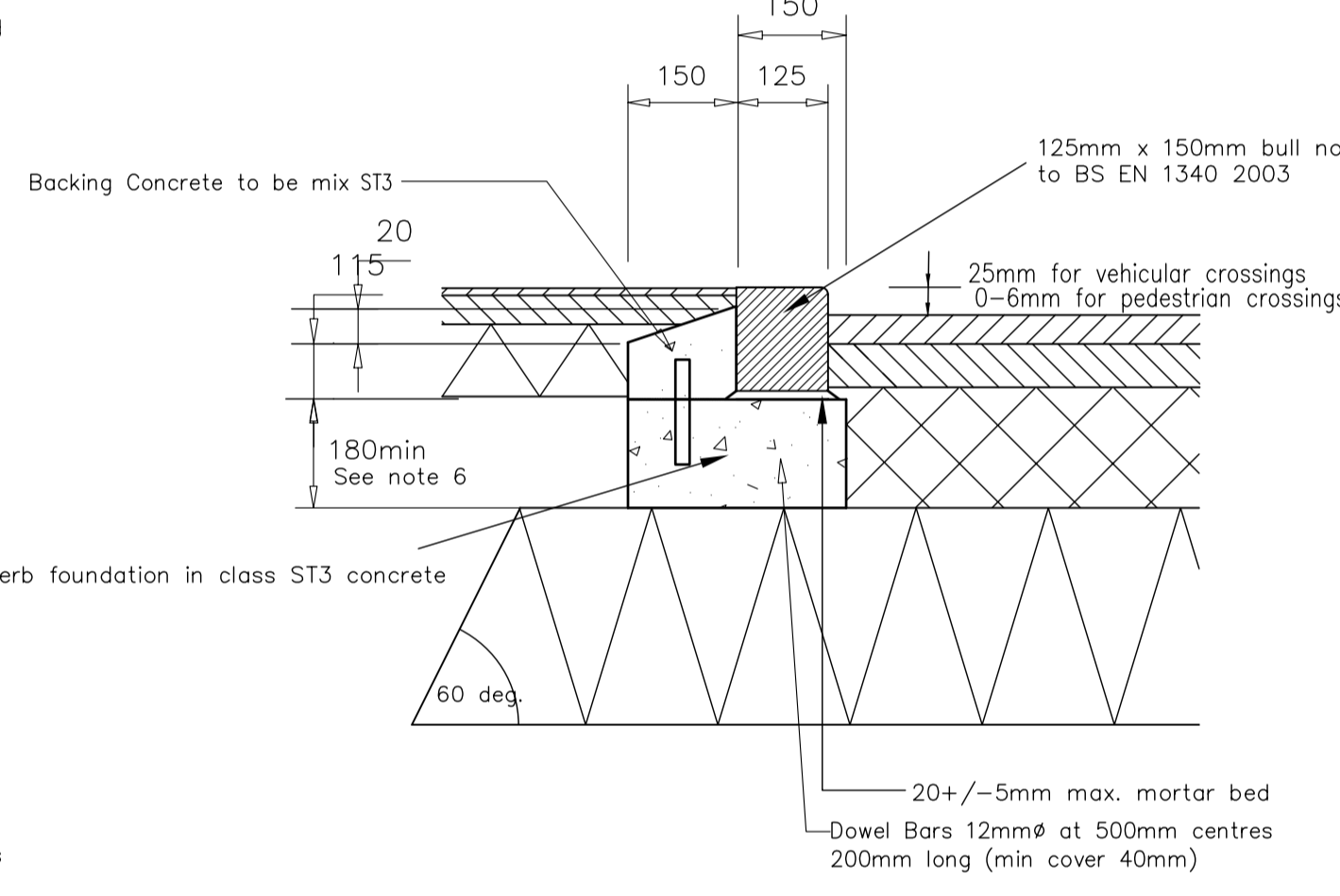
**BLOCK PAVED ROAD CONSTRUCTION DETAIL**

**SCC Kerbing Notes**

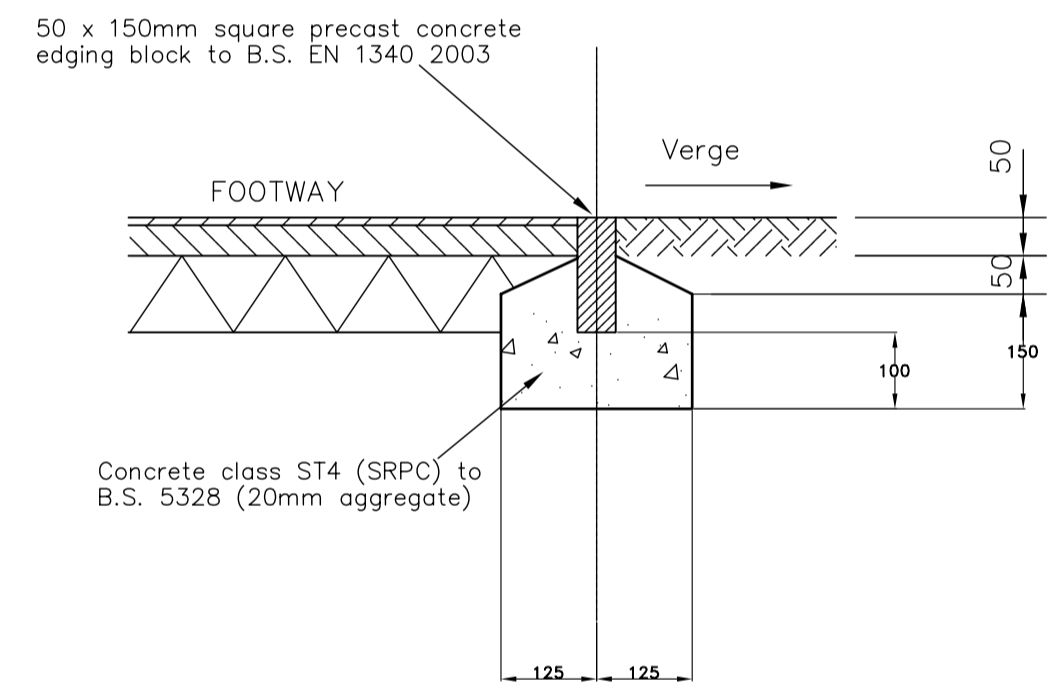
- Where kerbing is to be laid to a radius of 12m or less then radius kerbs shall be used to radii shown in BSEN 1340
- (i) When depth from top of foundation concrete to top surface of sub-base material is 150 or more, the foundation concrete shall extend to the whole of this depth  
(ii) When depth from top of foundation concrete to top surface of sub-base material is less than 150 thick and the sub-base material shall be excavated to obtain the foundation dimensions.
- Foundation and backing concrete dimensions may locally vary at gully, duct, marker slab and dropper kerb positions
- Expansion and contraction joints, drainage holes or pipes through concrete are as in Appendix 11/1
- The location of quadrants dropper kerbs and other special units are as shown on the drawings and shall be considered part of the predominant adjoining kerb "type" for measurement purposes
- As note 2 but for 150 read 180
- Thickness and extent of sub-base under kerb foundations is as shown to the outlines stated in the Contract
- Kerbs shall be manufactured by a wet press process and shall comply with BSEN 1340



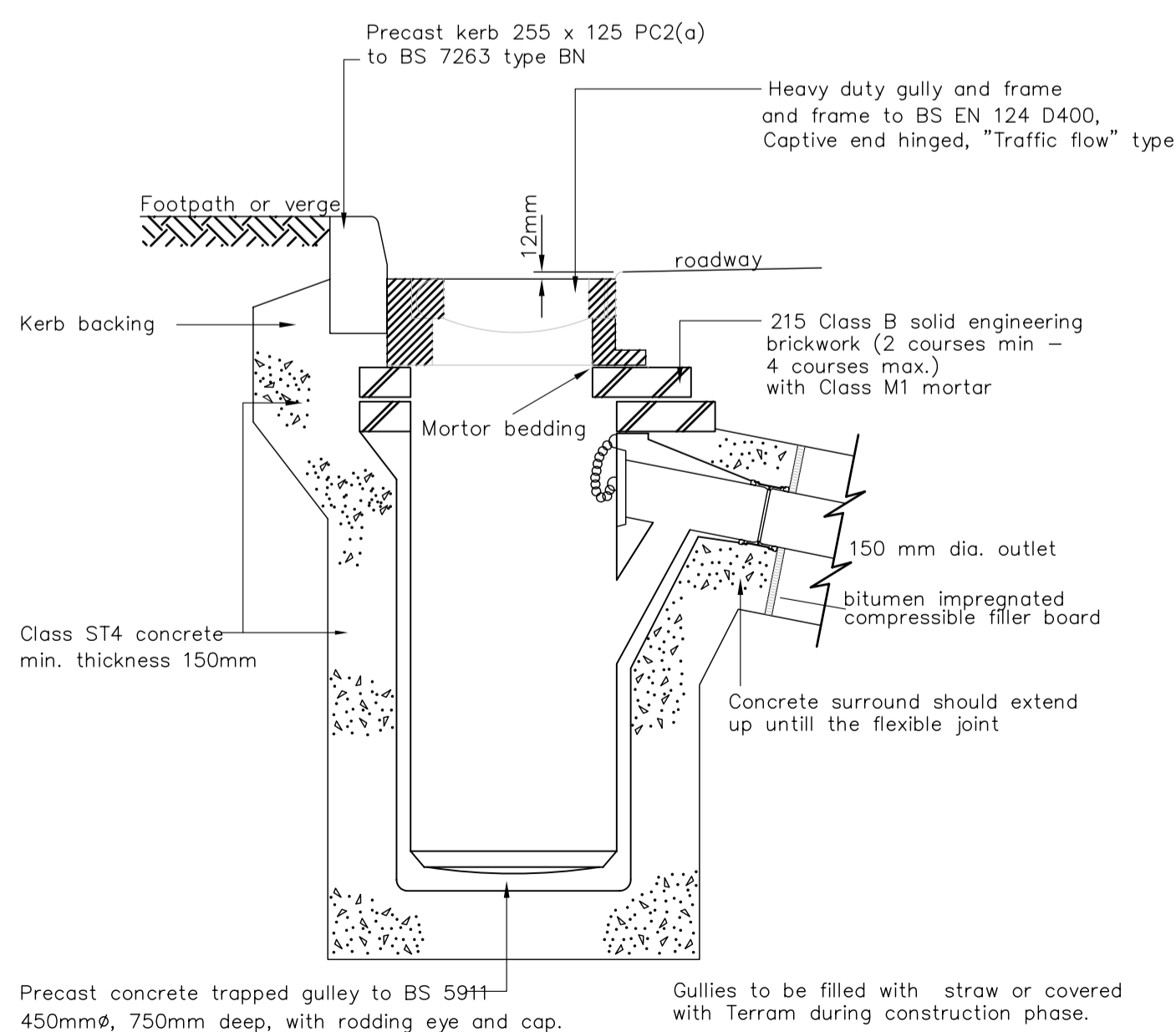
**TYPICAL HB2 KERB DETAIL**



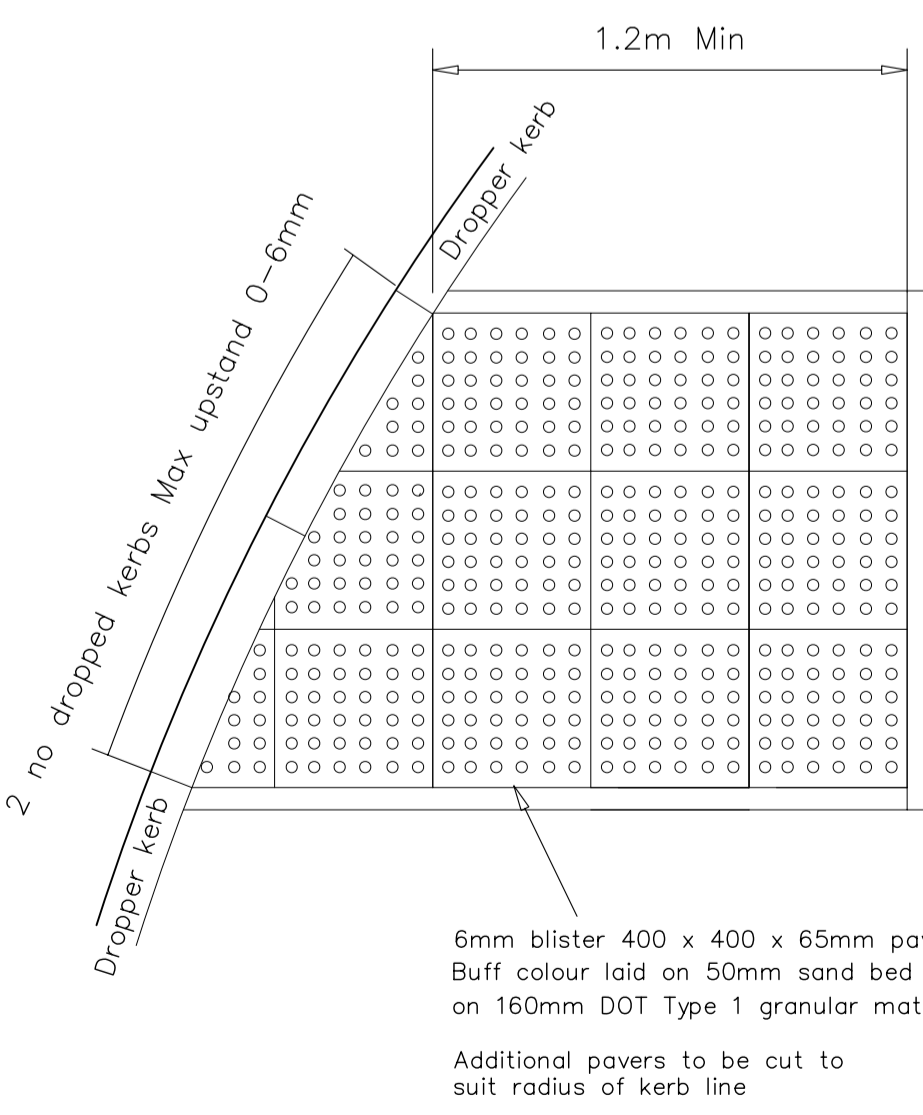
**TYPICAL BULLNOSE KERB CONSTRUCTION DETAIL**



**TYPICAL SQUARE FOOTWAY EDGING DETAIL**



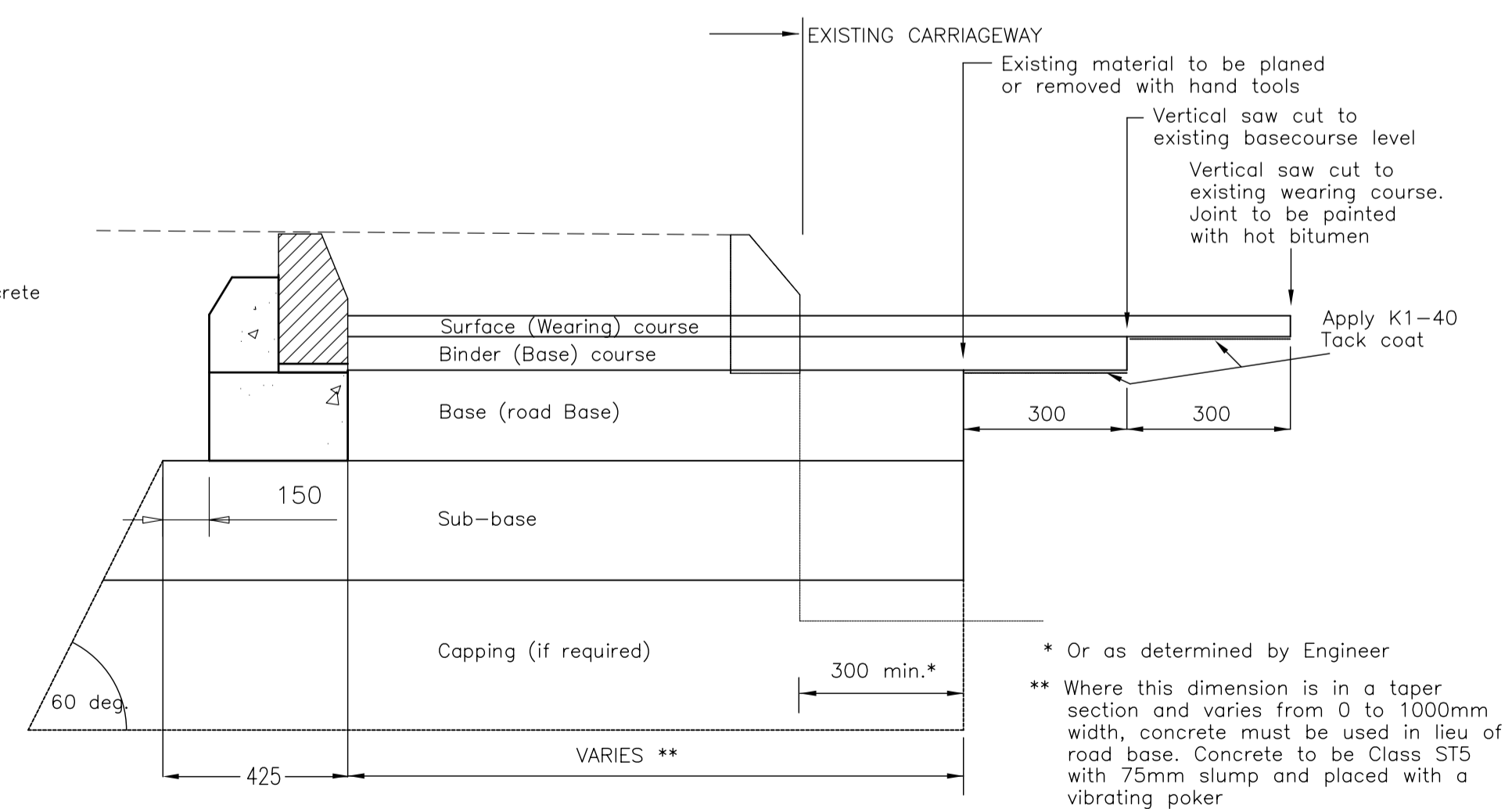
**PRECAST CONCRETE ROAD GULLY**



**TYPICAL TACTILE PAVING LAYOUT**

50 x 150mm square precast concrete edging block

Tactile layout to be a minimum 1.2m x 1.2m



**TYPICAL TIE IN DETAIL**

ALL SOFT SPOTS TO BE EXCAVATED OF POOR MATERIAL AND BACKFILLED WITH A CLEAN GRANULAR MATERIAL DOT TYPE 2 TO FORMATION AND WELL COMPACTED IN LAYERS ALL IN ACCORDANCE WITH DOT SPECIFICATION FOR HIGHWAY WORKS PART 2.

ALL PAVEMENT WORKS TO DEVELOPMENT TO BE IN ACCORDANCE WITH THE ABOVE SPECIFICATION AND DOT SPEC. FOR HIGHWAY WORKS PART 3.

All materials to be non frost susceptible.

THE PAVEMENT SPECIFICATIONS HIGHLIGHTED DO NOT INCLUDE FOR ANY REMEDIATION WORKS THAT MAY BE NECESSARY TO THE EXISTING FORMATION PRIOR TO ROAD WORKS COMMENCING

**NOTES**

DO NOT SCALE FROM THIS DRAWING. ALL DIMENSIONS MUST BE CHECKED/VERIFIED ON SITE

1. Highway construction materials and workmanship shall be in accordance with the Staffordshire County Council's Design Guide 2000

2. This drawing is to be read in conjunction with all other relevant Engineers and Architects details

3. All work is to be carried out in accordance with the current British Standards, B.S. codes of practice & Building Regulations.

4. Backfill to any trench within the adoptable highway to be Type 1 material

**CONSTRUCTION NOTES:**

Construction thickness of sub-base assumes a CBR between 3% and 15% at formation following completion of earthworks. However CBR tests will be required to finalise pavement thickness.

All materials to be non frost susceptible.

Placing and compaction of all materials shall be in accordance with the Department of Transport Specification for Highway Works

Air voids content for structural bituminous layer shall not exceed 6%.

**CAPPING LAYER THICKNESS**

Ground Support	Capping Layer (mm)	Sub-Base (mm)
< 2%	600	150
2% to less than 5%	350	150
5% to less than 15%		225mm sub-base laid in 2 layers max single layer thickness 125mm
More than 15%		150

The capping layer is dependent on the CBR test results. For CBR's below 2% special measures will be required See DMRB 7.2.2. HD25/94

Rev A SMA added to specification JS Nov 12

**PRELIMINARY**

**Armstrong Stokes & Clayton Limited**

Civil & Structural Engineering Consultants  
The Book Shop Chambers, 54 King Street, Southwell, Nottinghamshire, NG25 0EN  
Tel: 01636 814 815 Fax: 01636 816 343  
Client:

**Peveler Homes Limited**  
Job Title:  
Proposed Development at Burton Road  
Tutbury  
Staffordshire

Drawing Title:  
Section 38 Construction Details Sheet 1

Drawing number:  
P119A/308/A/P

Drawn: JLW Date: August 2012 Scale: N.T.S. A1

Preliminary Detailed Tender As Built