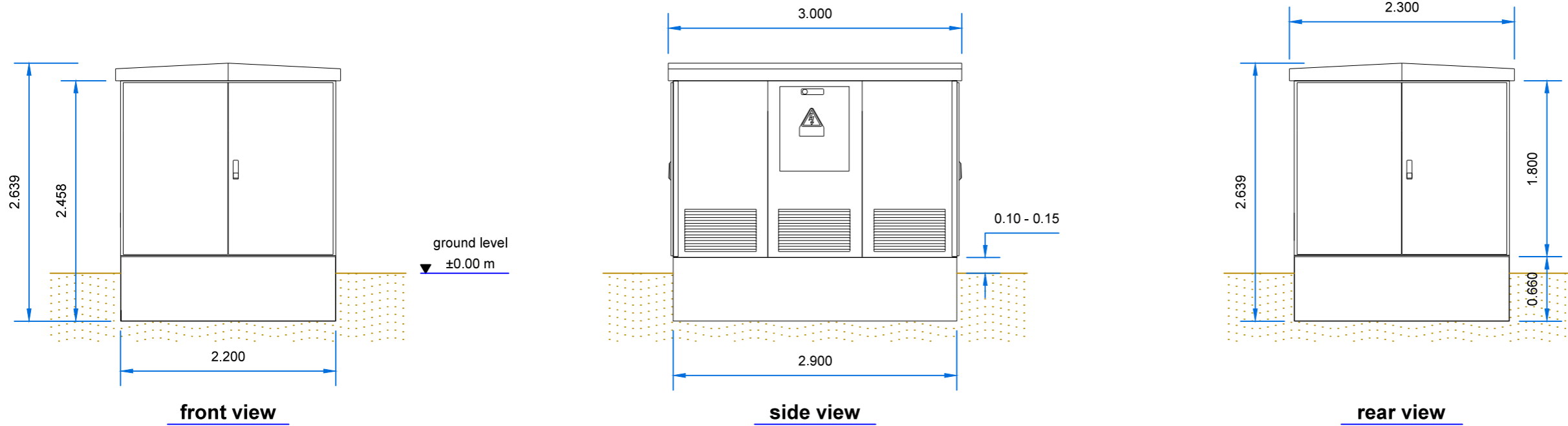


P/2016/01107
Received 12/09/2016



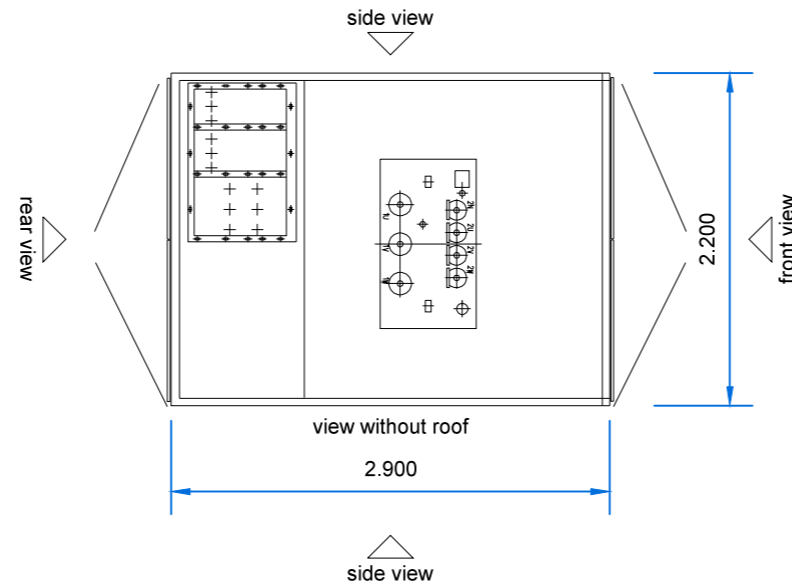
front view

side view

rear view

Remarks:

1. Transformer, LV - and MV - switchgear are connected with a base pan
2. Housing may be removed to the top

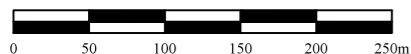


Space requirement:

Surface area mounting 6.38 sqm
Surface with opened doors 10.60 sqm

Weight:

Empty housing 1500 kg
Total weight 8500kg



1 : 50 @ A3

Our Ref number: Typical 8

Reproduction is permissible only with prior consent.
Scale from this drawing only if details of scale and page size are given.
Check that this is the latest version of this drawing.

Rev	Date	Drawn	Check	App'd
00	26 / 07 / 2016	NRM	AM	PVR

DRAWING NUMBER
Details of the plant 8

DRAWING TITLE
Transformer Station

NOTE
1. Dimensions in metres



39 Austenway,
Gerrards Cross Bucks SL9 8NN
Company Number 10077874
info@lyricenergy.co.uk